

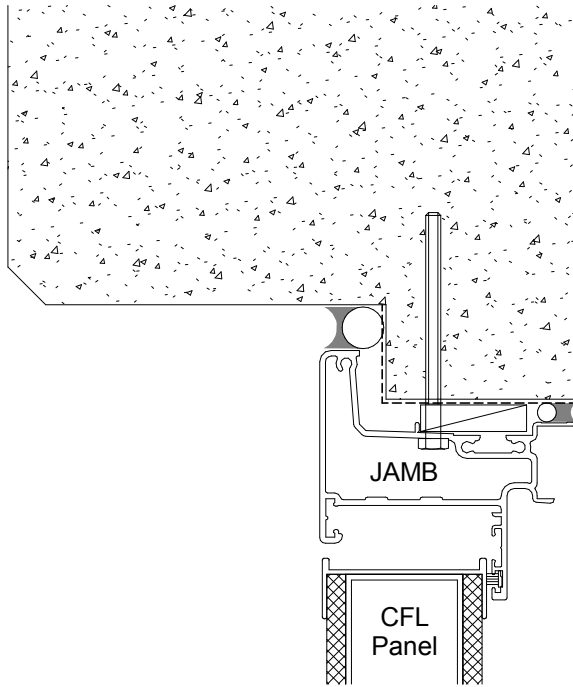
- Panel thickness = 42mm
- Can be made any size up to 2400 x 1200mm.
- Panel made with 1.0mm aluminium skin on durable ply sheets with dense foam core.
- Finish: Specialist powder coated to any colour available.
- For our full warranty details refer to our website.
- Hung in Parkwood door frames: Pacific or Box Frame (refer details)
- These drawings and pictures are representations of the panel only - detail not exact.

Range: Commercial  
Type: Aluminium Commercial Door  
Version: 1.0

Code: Commercial CFL

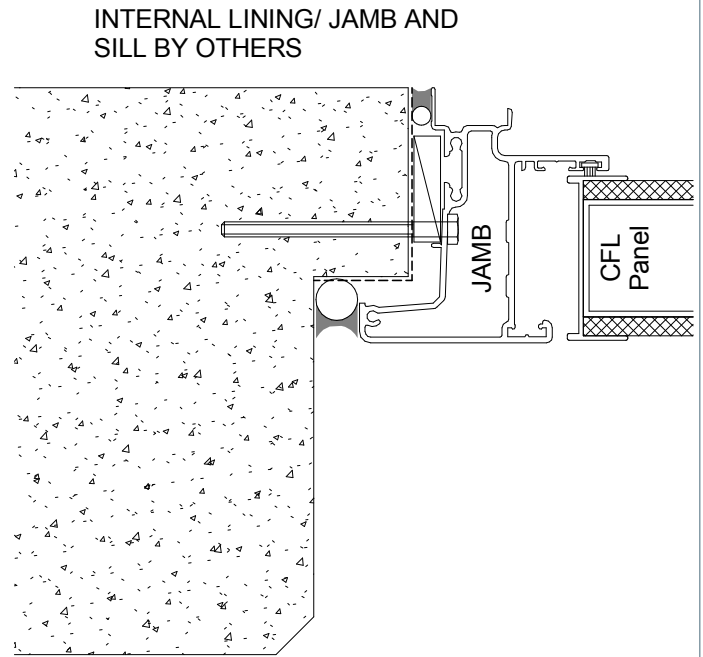


[www.parkwooddoors.co.nz](http://www.parkwooddoors.co.nz)  
[www.parkwooddoors.com.au](http://www.parkwooddoors.com.au)

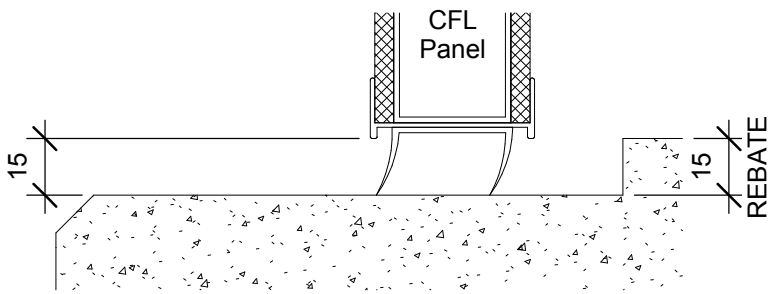


HEAD DETAIL

INTERNAL LINING/ JAMB AND  
SILL BY OTHERS



JAMB DETAIL



SILL DETAIL

## TILTUP SLAB INDICATIVE DETAILS - PACIFIC FRAME

1 : 2

- These details are indicative only - full responsibility lies with the detailer/ documentor to ensure application of these indicative details conforms to all relevant Australia and/or NZ Standards.

A4 1:2 100mm

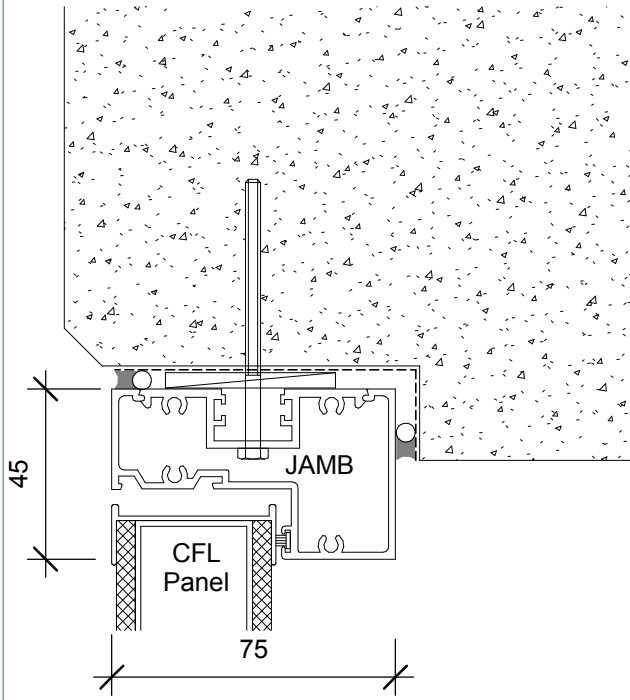


Range: Commercial  
Type: Indicative Details Pacific Frame  
Version: 1.0

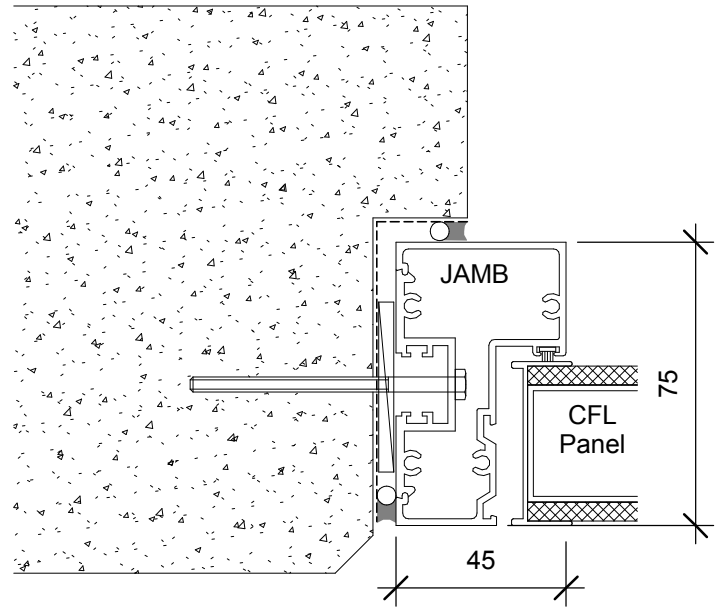
Code: Pacific Frame o/o



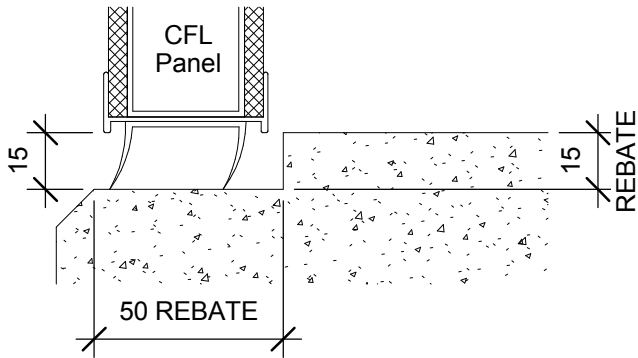
[www.parkwooddoors.co.nz](http://www.parkwooddoors.co.nz)  
[www.parkwooddoors.com.au](http://www.parkwooddoors.com.au)



HEAD DETAIL



JAMB DETAIL



SILL DETAIL

## INDUSTRIAL WAREHOUSE - TILTUP SLAB INDICATIVE DETAILS BOX FRAME 75mm

1 : 2

- These details are indicative only - full responsibility lies with the detailer/ documentor to ensure application of these indicative details conforms to all relevant Australia and/or NZ Standards.

A4 1:2 100mm



Range: Commercial  
 Type: Indicative Details Frame B 75mm  
 Version: 1.0

Code: **Box Frame 75mm**



[www.parkwooddoors.co.nz](http://www.parkwooddoors.co.nz)  
[www.parkwooddoors.com.au](http://www.parkwooddoors.com.au)